

# PARTNERS HOTELS OF THE GENEVA **WATCH** DAYS

ROTONDE DU MONT-BLANC





## HÔTEL AUTEUIL BY MANOTEL GROUP



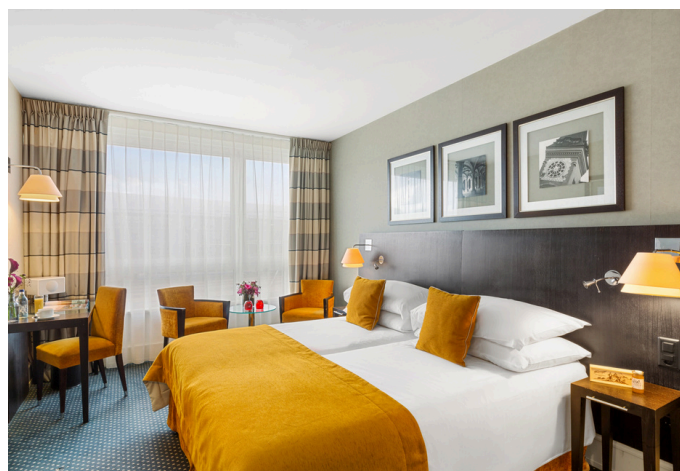
### Welcome to the Auteuil

Urban contemporary hotel. Located close to the main train station. 10-minute walk from the Geneva Watch Days pavilion.

Features a breakfast room, a private parking, and air-condition.

Complimentary access to the fitness center, and to the Hôtel Royal's spa 50 meters away. Welcome pastry.

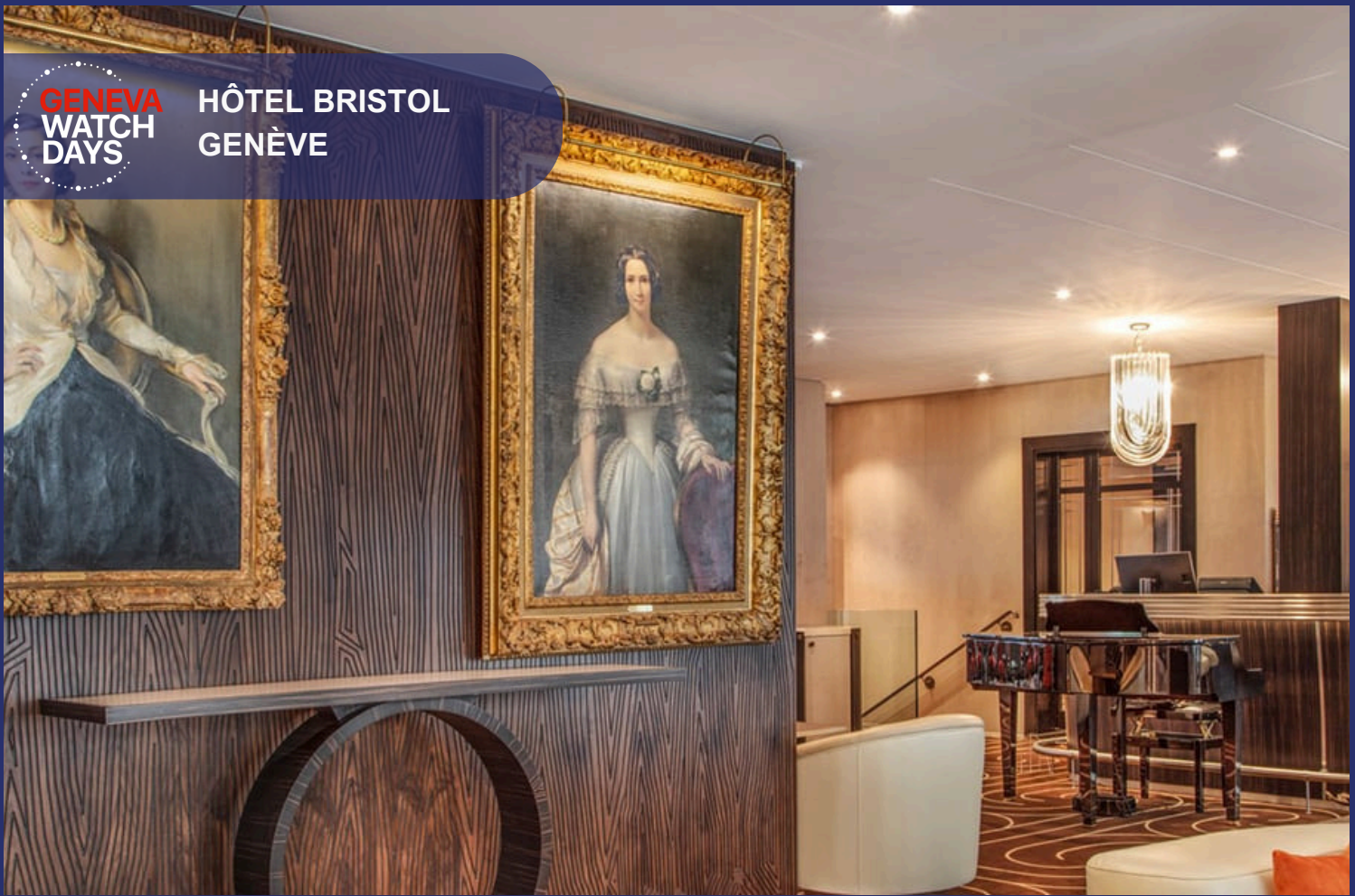
Complimentary public transportation pass valid throughout Geneva is included.



### LOCATION

33 rue de Lausanne, 1201 Geneva





**GENEVA  
WATCH  
DAYS**

**HÔTEL BRISTOL  
GENÈVE**

## Welcome to the Bristol Geneva

Boutique & Design 4-star superior hotel. A few steps from the lake and 6-minute walk from the Geneva Watch Days pavilion. Art Deco contemporary design.

Features a women's floor only, desk with individual wifi router, massages, a few parking spaces on demand.

Welcome chocolate on arrival. Access to the spa, hammam, sauna, and fitness center.

Complimentary public transportation pass valid throughout Geneva is included.



## LOCATION

Rue du Mont-Blanc 10, 1201 Geneva





## CROWNE PLAZA GENEVA



### Welcome to the Crowne Plaza Geneva

Modern and elegant 4-star superior hotel close to the airport. Bus ride to the city center in 15 minutes. Ultramodern and cosy rooms. Features breakfast outside in the garden, 24-hour dining, a free airport shuttle and parking facilities. Complimentary access to the fitness center.

Bus n°10, stop Meyrin-De Joinville.

Complimentary public transportation pass valid throughout Geneva is included.



### LOCATION

Avenue Louis Casati 75-77, 1216 Geneva





## Welcome to the Angleterre Geneva

Boutique hotel with British charm and historic landmark facing the lake and the Geneva Watch Days pavilion. Unique design rooms filled with art lithographs.

Features British afternoon tea, and a cigar lounge. Welcome drink, fruits, chocolate on arrival. In-room water every day, coffee, tea.

Complimentary public transportation pass valid throughout Geneva is included.



## LOCATION

17 Quai du Mont Blanc, 1201 Geneva





## FRASER SUITES GENEVA



### Welcome to the Fraser Suites Geneva

Fully furnished luxury services residences located in the business district, 10-minute walk from the Geneva Watch Days pavilion.

Features 24-hour reception, security, and concierge services, a well-equipped kitchen, self-service laundry, and wheelchair accessibility.

Welcome amenities, and access to the 24-hour fitness center.

Complimentary public transportation pass valid throughout Geneva is included.



### LOCATION

Rue de la Rotisserie 5, 1204 Geneva, Suisse





## INTERCONTINENTAL GENÈVE

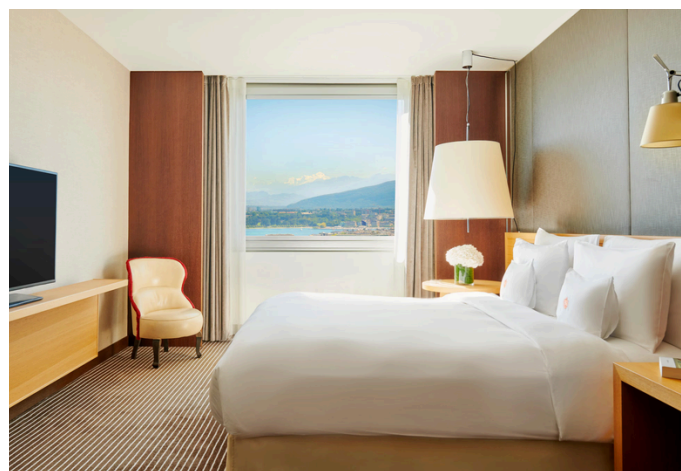


### Welcome to the Intercontinental Geneva

Luxury icon, located in the calm diplomatic district. Car ride to the city center in 10 minutes. Elegantly designed rooms with breathtaking views on lake and the Mont Blanc. Seasonal and local products in the restaurants. Features a cigar lounge, Cinq Mondes spa, wheelchair accessibility, and parking. Access to the gym.

Bus n°5, stop InterContinental.

Complimentary public transportation pass valid throughout Geneva is included.



### LOCATION

7 Chemin du Petit-Saconnex 9, 1209 Geneva





## LA RÉSERVE GENÈVE – HOTEL AND SPA



### Welcome to La Réserve Geneva

Cozy luxury resort, located in a 10-acre park 5 km outside the city. Venetian boat to ferry to the city center in 15 minutes.

Features a Cantonese restaurant Tsé Fung awarded with one Michelin star, kids club, sport courts, garden.

Complimentary soft drinks minibar, newspapers in the room, movies on TV, outdoor parking and boat transfer, access to the Nescens spa, sauna, fitness center, tennis, and indoor & outdoor pool.

Complimentary public transportation pass valid throughout Geneva is included.



### LOCATION

Route de Lausanne 301, 1293 Bellevue





**GENEVA**  
WATCH  
DAYS

**MANDARIN  
ORIENTAL GENEVA**

## Welcome to the Mandarin Oriental

Contemporary chic hotel, located in the shopping, cultural, and business district, alongside the Rhône River, 8-minute walk from the main train station. Features a rooftop terrace, Japanese and Ottolenghi's restaurant parking and e-parking. Access to the 24-hour fitness center.

Complimentary public transportation pass valid throughout Geneva is included.



## LOCATION

Quai Turrettini 1, 1201 Geneva





## HÔTEL MÉTROPOLE GENÈVE



### Welcome to the Hôtel Métropole Geneva

Iconic luxury hotel from 1854 located on the left bank at the famous shopping street Rue du Rhône. Panoramic rooftop terrace with a breathtaking view over the lake. 10-minute walk from the Geneva Watch Days pavilion. 10% at the MET Rooftop restaurant.



Complimentary public transportation pass valid throughout Geneva is included.

### LOCATION

Quai General-Guisan 34, 1204 Geneva





## HÔTEL N'VY BY MANOTEL GROUP



### Welcome to the N'VY

Casual urban and design-art 4-star superior hotel. 13-minute walk from the Geneva Watch Days pavilion. Unique and individual styled rooms. Features a cocktail bar, 24-hours room service, private parking with valet parking, and air-condition. Complimentary access to the fitness center. Welcome pastry.

Complimentary public transportation pass valid throughout Geneva is included.



### LOCATION

18 rue de Richemont, 1201 Geneva





## HÔTEL PRESIDENT WILSON



### Welcome to the President Wilson

A five-star retreat on the shores of Lake Geneva, offering panoramic views, refined comfort, and spacious rooms with floor-to-ceiling windows. Just a 9-minute walk from the Geneva Watch Days pavilion. Home to the Michelin-starred Bayview by Michel Roth, the elegant Arabesque restaurant, and the seasonal lakeside venue Rive Droite. Breakfast includes Continental, American, Chinese, and Oriental options. Children's menu available. Unique La Mer Spa, featuring a sauna, hammam, outdoor pool, and a fully equipped fitness center. Luxury touches include an exclusive Tom Ford and La Mer boutique and Byredo Paris bath amenities. Complimentary public transportation pass valid throughout Geneva is included.

Complimentary public transportation pass valid throughout Geneva is included.



### LOCATION

47, Quai Wilson, 1211 Geneva 8





## HÔTEL ROYAL BY MANOTEL GROUP

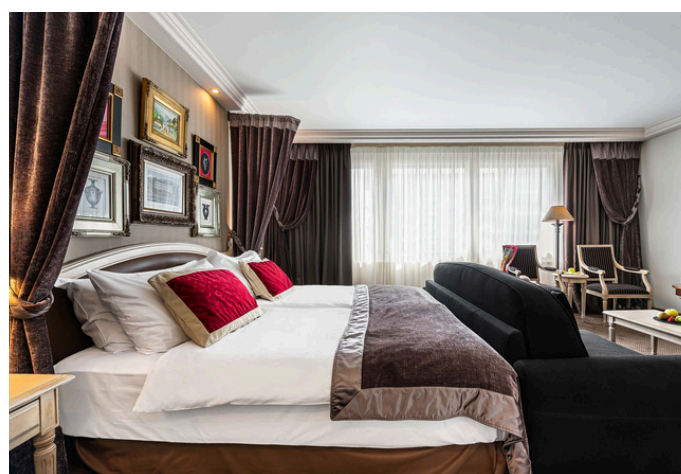


### Welcome to the Royal

Neoclassical architecture designed 4-star superior hotel. A few steps from the main train station and 10-minute walk from the Geneva Watch Days pavilion.

Features a French restaurant L'Aparté awarded with one Michelin star, 24-hours room service, private parking with valet parking, air-condition. Complimentary access to the fitness center, sauna, and hammam. Welcome pastry.

Complimentary public transportation pass valid throughout Geneva is included.



### LOCATION

Rue de Lausanne 41-43, 1201 Geneva





## THE WOODWARD GENEVA



### Welcome to the Woodward Geneva

All-Suite hotel hosted in a historic building facing the lake and Mont Blanc. Classic-contemporary individual interiors. 6-minute walk from the Geneva Watch Days pavilion. Features a 2 Michelin-star restaurant L'Atelier Robuchon, a fine dining restaurant Le Jardinier, an iconic Bar 37 overlooking the lake and a cigar lounge. Complimentary soft drinks minibar, welcome chocolate, fruits, and water, parking, access to the 1,200 sqm Gerlain Spa bold, indoor pool, hot tub, steam rooms, Swedish baths, and fitness center.

Complimentary public transportation pass valid throughout Geneva is included.



### LOCATION

Quai Wilson 37, 1201 Geneva